

**WATERPROOFING
PRODUCTS**

Our dear customer :

Teson Waterproofing had received your year's support and we can't express full heartily our appreciation in single word.

Amid unprecedented pandemic onslaught perhaps only comparable from Spain flu ; with your years' support and recognition , We remain vigilant and continue our product development with deliberation and never lost our creativities .

After intensive research and development commitment during the last 18 months , We now humbly share new product we added and ready to provide additional repair and maintenance solution within our Teson waterproofing product catalogue :

- **Teson ready-to use Tile Grout (TM 401) :**

It don't require pre-mixing , direct apply for new grouting or repair of existing grouting defect , no sagging with excellent abrasion resistance performance , It is suitable for tile grouting at kitchen , bathroom , etc.

- **Tesonproofer (TW-MP113) :**

It is one component ,highly versatile waterproofing coating and suitable to act as primer , cement mixture , paint additive , with superior waterponding and adhesion performance , It is suitable for substrate preparation for roof deck re-waterproofing application .

- **Teson shield -HR (TW-111 HR) :**

It is one component coating ,inherits with waterproofing and heat reflection properties; suitable for metal roof , concrete deck and building façade application . SIRIM certificate is available for reference .

- **Teson shield -FB (TW-111-FB) :**

It is one component waterproofing with micro fiber reinforcement , Such reinforcement will provide super strength and durable protective waterproofing coating and enjoys installation productivity .

- **Teson decoat 11 (TW-210) :**

It will provide stain and water resistance performance for outdoor floor area such as parking , terrace ,as well as indoor area such as shower room and kitchen , etc. .

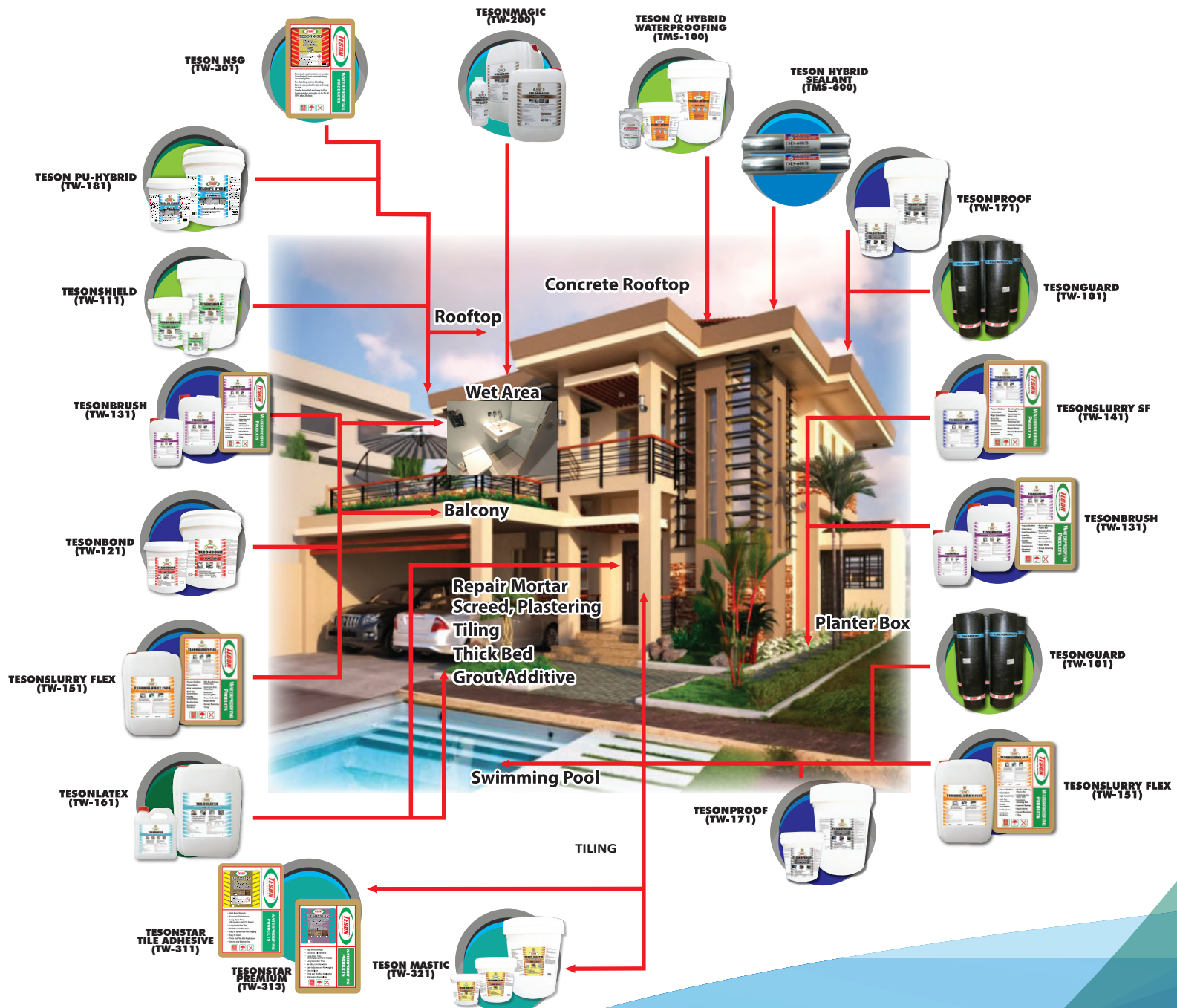
Between page 20 to 23 ,We include project reference related of roof deck re-waterproofing work , Teson shield (TW-111) , Teson proffer (TW-MP113) reinforced with fiber mesh are installed on site .

We also will take this opportunity to organize and produce a Teson product illustration video , It will include above five new products as well as major unique product from Teson we had supplied for years , such as Alpha hybrid 30 minutes rain resistance waterproofing (TMS 100) , Teson paintable hybrid sealant (TMS 600) ,Teson PU Hybrid waterproofing (TW-181) ,Teson magic nano-enhanced water repellant (TW-200) and Teson mastic ready to use tile adhesive (TM-321) .

Let's be ready for post-pandemic and wish Teson waterproofing will always be your favorable choice and we will continue to work relentlessly be your repair and maintenance partner years ahead .

Let's stay safe and healthy with togetherness.

From management of Teson Waterproofing



PAGE OF CONTENTS

1. ROOF / WALL / BASEMENT 屋頂／牆面／地下室

TESONGUARD (TW-101)	熱融式防水毯	
TESONSTICK (TW-102)	自黏性防水毯	PAGE 1
TESONSHIELD (TW-111)	高彈性水性防水膠	
TESONCOAT (TW-112)	高彈型水性防水膠(牆面)	PAGE 2
TESONSHIELD AR (TW-111 AR)	高彈性水性防銹膠	
TESON PU HYBRID (TW-181)	單一型水性聚氨酯防水塗料	PAGE 3
TESON PU-HYBRID FB (TW-181FB)	高彈性 微纖維增強水性防水膠	
TESON ALPHA HYBRID (TMS-100)	混合體防水材	PAGE 4

2. WATERPROOFING 防水

TESONBOND (TW-121)	雙成份組合DIY彈性防水水泥	
TESONBRUSH (TW-131)	雙成份組合彈性防水水泥	PAGE 5
TESONSLURRY SF (TW-141)	雙成份組合彈性防水水泥	
TESONSLURRY FLEX (TW-151)	雙成份組合彈性防水水泥	PAGE 6
TESONPROOF (TW-171)	單一型水性瀝青聚氨酯防水塗料	
TESON PU FOAM (TW-191)	聚氨酯發泡裂縫針料	PAGE 7

3. SEALING & BONDING 密封和粘接

TESON HYBRID SEALANT (TMS-600)	低彈性膜數添填劑	
TESON ACRYLIC SEALANT (TE-500)	水性可上漆填縫劑	PAGE 8
TESON SILICONE (TE-600)	硅橡膠填縫劑	PAGE 9

4. MORTAR 膠灰

TESONSTAR TILE ADHESIVE (TM-311)	C1TE 地磚膠	
TESONSTAR PREMIUM TILE ADHESIVE (TM-313)	C2TE 地磚膠	
TESON NSG (TM-301)	通用級無收縮水泥	PAGE 10
TESON MASTIC (TMS-321)	專業級地磚黏劑	PAGE 11
TESON READY-TO-USE TILE GROUT (TM-401)	即用型瓷磚間隙填料	

5. REFURBISHMENT 修補加固

TESONSHIELD FB (TW-111FB)	(單成分微纖維增強防水膠)	PAGE 12
TESONSHIELD-HR (TW-111-HR)	(單成分隔熱和防水膠)	
TESONSPROOFER (TW-MP113)	(單組份高多功能液體防水膜)	PAGE 13
TESON DECOAT 11 (TW-210)	(單成分的防污耐水透明塗料)	

6. PROJECT PHOTO & WATERPROOFING DETAIL 項目照片

TESONLATEX (TW-161)	混凝土強化添加劑	PAGE 14
TESONMAGIC (TW-200)	低揮發性納米強化抗水劑	
AQUASTICK (TAS2)	(速乾水底漆)	PAGE 15
HARDEX INJECTION ANCHOR (PURE EPOXY RESIN) (H-E280)	環氧射出形錨固膠	
HARDEX PU FOAM (HPU-30)	聚胺發泡膠	PAGE 16
SEALANT GUN/TESON PE BACKER ROD	填縫劑出料槍/密封式發泡材料	
PROJECT PHOTO (PROJECT REFERENCE)	工地實績照片參考	PAGE 17
TW-111 TESSONSHIELD (PROJECT REFERENCE)	工地實績照片參考	PAGE 18
TW-181, TMS-600, TMS-100 & TW-141 (PROJECT REFERENCE)	工地實績照片參考	
(TMS 600 PROJECT REFERENCE)	施工示意圖 TMS 600 項目參考	PAGE 19
(TW-181 PU HYBRID PROJECT REFERENCE)	屋頂水泥面防水全系列產品施工示意圖	PAGE 20
PROJECT PHOTO (PROJECT REFERENCE)		PAGE 21
(TW-MP-113 PROJECT REFERENCE)		PAGE 22
(TW-111 PROJECT REFERENCE)		PAGE 23
(TW-181, TMS-600 & CSM FIBER)		PAGE 24
TESON WATERPROOFING SOLUTION		PAGE 25
TESON WATERPROOFING SOLUTION		PAGE 26
TESON WATERPROOFING SOLUTION		PAGE 27
TESON WATERPROOFING SOLUTION		PAGE 28



TESONGUARD (TW-101)

TORCH ON MEMBRANE (熱熔式防水毯)



A 1x10m reinforced bitumen sheet, through state of the art design including bitumen compound, reinforcement technology and selective top finish, exhibits excellent waterproofing performance through torch on application. It will apply mainly in concealed site condition (sanded type) or suitable to apply in exposed condition (mineral type) with slates top finish in membrane itself and performs UV, ozone resistance. TW-101 will provide good dimensional stability, excellent mechanical properties. The membrane technology will also include innovation product such as acoustic, anti-rooting, self-adhesive type of membrane within its range.

Product Uses / 用途

- Roof Top Of Commercial And Residential Building
- Basement
- Retaining Walls
- Tunnels
- Balconies
- Trafficable Areas
- Planter Box
- 商業和住宅樓頂
- 地下室
- 擋土牆
- 隧道
- 陽台
- 交通領域
- 花盆盒

Characteristics & Advantages / 特性

- Positive barrier to water & vapour.
- Good UV light resistance (mineral).
- Withstand thermal shocks.
- High flexibility at low temperature.
- Good elastic memory.
- Easy application.
- 對水和蒸氣提供有效的正面防水障礙。
- 良好的抗紫外線性 (僅限礦物成品)。
- 耐熱。
- 低溫下的高靈活性。
- 良好的彈性記憶。
- 容易使用。

Colour / 顏色	Packaging / 包裝
Sanded - 岩面 black - 黑色	3mm Sanded Finish - 10m x 1m x 3mm
Mineral - 顆粒 Grey/Green - 灰色/ 青色	4mm Sanded Finish - 10m x 1m x 4mm
	4.5kg Mineral - 10m x 1m x 3.5mm



TESONSTICK (TW-102)

SELF ADHESIVE MEMBRANE (自黏性防水毯)



TESONSTICK is a self adhesive, cold applied bitumen modified waterproofing membrane, with a fiberglass carrier. It has a release film on the under layer while the upper surface is covered with polyethylene surface finish material.

Product Uses / 用途

- Bathroom, kitchen and wet area waterproofing
- Base layer in double layer roofing or waterproofing system application
- Waterproofing of balconies
- 浴室，廚房和濕面防水RC 屋頂
- 雙層屋面/防水系統
- 陽台的防水系統

Characteristics & Advantages / 特性

- No torch needed.
- No hazardous fumes.
- Easy to apply.
- Suitable for roofing of historical structure, combustible deck structure, health care and educational facilities.
- Application tools comprise a brush, a cutter and a rubber roller.
- Fiberglass reinforcement ensures maximum dimensional stability to the membrane.
- Reliable barrier against vapor and water above and below ground.
- Provide protection for sub structure against corrosive ground water and salts.
- Selvage strip provides bitumen to bitumen seal ensuring water tightness at longitudinal joints.
- 不需要火炬槍。
- 無有害煙霧。
- 易於施工。
- 適用於歷史建築，可燃甲板結構，衛生保健的屋面和重鋪。
- 應用工具包括刷子，切割器和橡膠輥。
- 玻璃纖維增強和確保材料最大尺寸的穩定性。
- 對地面上和地面下的蒸氣和水進行可靠的操縱。
- 防止地下水和鹽的腐蝕。
- 瀝青條確保縱向接縫處的防水緊密度。

Colour / 顏色	Packaging / 包裝
Black - 黑色	20m x 1m





TESONSHIELD (TW-111)

1-P POLYMER-MODIFIED WATERPROOFING MEMBRANE (高彈性水性防水膠)

TESONSHIELD is one component, ready to use, non-toxic, water based polymerized product, design to perform an elastomeric liquid applied waterproofing membrane. It can apply by brush, roller or spray and capable to form seamless membrane with excellent water resistant and minimum wastage. The average coverage will be 1 to 2 kg/m², requires minimum 2 to 3 coats subject to application.

Product Uses / 用途

- RC Roof
- Roof Garden, Terrace
- Toilet, Kitchen
- Balcony, Planter Box
- Retaining Wall
- Swimming Pool
- RC 屋頂
- 屋頂花園，露台
- 衛生間，廚房
- 陽台，花盆盒
- 擋土牆
- 游泳池

Characteristics & Advantages / 特性

- Environmental friendly
- Non-toxic & Non-flammable (solvent free)
- No mixing, ready to use straight from container
- Faster setting and curing time
- Good adhesion to many substrates
- 環保.
- 無毒，不易燃（無溶劑）.
- 不需混合，直接從容器中使用.
- 更快的設定和固化時間.
- 對許多基材的粘合性好.



Colour / 顏色	Packaging / 包裝
White - 白色	1.4kg pail
Grey - 灰色	5kg pail
	20kg pail

TESONCOAT (TW-112)

1-P POLYMER-MODIFIED WATERPROOFING MEMBRANE (高彈性水性防水膠)

TESONCOAT is one component, ready to use, non-toxic, water-based polymerized product, design to perform an elastomeric liquid applied waterproofing membrane. It can apply by brush, roller or spray and capable to form seamless membrane with excellent water resistance and minimum wastage. The average will be 1 kg/m², requires minimum 2 to 3 coats subject to application.

Product Uses / 用途

- RC Roof
- Roof Garden, Terrace
- Toilet, Kitchen
- Balcony, Planter Box
- Retaining Wall
- Swimming Pool
- External wall
- RC 屋頂
- 屋頂花園，露台
- 衛生間，廚房
- 陽台，花盆盒
- 擋土牆
- 游泳池
- 外牆

Characteristics & Advantages / 特性

- Environmental friendly
- Non-toxic & Non-flammable (solvent free)
- No mixing, ready to use straight from container
- Faster setting and curing time
- Good adhesion to many substrates
- 環保.
- 無毒，不易燃（無溶劑）.
- 不需混合，直接從容器中使用.
- 更快的設定和固化時間.
- 對許多基材的粘合性好.



Colour / 顏色	Packaging / 包裝
White - 白色	1.4kg pail
Grey - 灰色	5kg pail
	20kg pail



TESONSHIELD AR (TW-111AR)

1P-POLYMER-MODIFIED WATERPROOFING & ANTI-RUSTING MEMBRANE 高彈性水性防銹膠

It is one component, ready to use, non-toxic, water-based polymerized product, designed to perform an elastomeric liquid applied waterproofing membrane. It can apply by brush, roller or spray and capable to form seamless membrane with excellent water resistance and minimum wastage. The average coverage will be 1 to 2 kg/m², requires minimum 2 to 3 coats subject to application.

Product Uses / 用途

- RC Roof
- Roof Garden, Terrace
- Toilet, Kitchen
- Balcony, Planter Box
- Retaining Wall
- Swimming Pool
- RC 屋頂
- 屋頂花園, 露台
- 衛生間, 廚房
- 陽台, 花盆盒
- 擋土牆
- 游泳池

Characteristics & Advantages / 特性

- Anti-rusting
- Flexible / Elongate
- Non-toxic
- Easy application
- Seamless
- Water-based
- Low odour
- Non-hazardous
- 環保.
- 無毒, 不易燃 (無溶劑).
- 不需混合.
- 更快的設.
- 對許多基.
- 水性.
- 低模量.
- 无危險.

Colour / 顏色	Packaging / 包裝
White - 乳白色	1.4kg pail
Grey - 灰色	5kg pail
	20kg pail

TESON PU HYBRID (TW-181)

PU-HYBRID LIQUID MEMBRANE (高彈性水性防水膠)

TW-181 water based elastic waterproofing membrane is mainly made of high-polymer material enhanced with a certain quantity of modifier. The product is a highly flexible emulsion that can be applied without pre-heating and one component waterproofing. TW-181 is non-toxic, odorless, non-corrosive and UV resistance.

Product Uses / 用途

- RC Roof
- Exterior Wall
- Toilet, Kitchen
- Balcony
- Planter Box
- RC 屋頂
- 外牆
- 衛生間, 廚房
- 陽台
- 花盆盒

Characteristics & Advantages / 特性

- Water-based, non-toxic and odorless
- One component, can apply to damp surfaces
- Extremely to water immersion
- Good resistance to heat and weathering
- Keep flexible for long period
- Clean up easily
- 水性, 無毒, 無味.
- 單一組, 可應用於潮濕的表面.
- 極好的抗水浸功能.
- 耐熱和耐候性好.
- 長期保持靈活性.
- 容易清理.

Colour / 顏色	Packaging / 包裝
White - 乳白色	1.4kg pail
Grey - 灰色	5kg pail
	20kg pail



TESONPLUS PU-HYBRID FB LIQUID MEMBRANE (TW-181FB)

PU-HYBRID FB LIQUID MEMBRANE (高彈性 微纖維增強水性防水膠)

LIQUID APPLIED MICRO-FIBER REINFORCED PU HYBRID WATERPROOFING MEMBRANE

Tw-181 FB water bases elastic waterproofing membrane is mainly made of high-polymer material with a certain quantity of modifier, and reinforced with micro-fiber reinforcement. The product is a highly flexible emulsion, with enhanced tensile strength, that can be applied without pre- heating and one component waterproofing, Tw-181 FB is non-toxic, odorless, non- corrosive and UV resistance.

Product Uses / 用途

- RC roof
- External wall
- Toilet, Kitchen
- Balcony
- Planter box
- Metal roof
- RC 屋頂
- 外牆
- 廁所, 廚房
- 陽台
- 花台
- 金屬屋頂

Characteristics & Advantages / 特性

- Water-based, Non-toxic, and odorless
- One component, Can apply to damp surface
- More than 50 % extra tensile strength
- Extremely resistance to water immersion
- Good heat and weathering resistance
- Durable flexibility
- Reinforcing fiber mesh not required
- Clean up easily
- 水性, 無毒, 無味
- 單液型, 潮濕面施工可行
- 超過 50% 拉力彈度
- 抗水浸功能優越
- 耐熱, 耐候性佳
- 具有長期彈性
- 玻纖補強不再須要
- 清理容易



Completion of roof deck work



Roof deck application

Colour / 顏色

White - 乳白色
Grey - 灰色

Packaging / 包裝

1.4kg pail
5kg pail
20kg pail

TESON α -HYBRID WATERPROOFING MEMBRANE (TMS-100)

ALPHA 混合体防水材

TESON α -HYBRID WATERPROOFING MEMBRANE (TMS-100) is a solvent, water and bitumen-free, non-slump waterproofing membrane. After cured completely, it will be impermeable to water and has crack-bridging up to maximum 5mm.

Product Uses / 用途

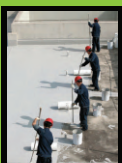
- Flat Roof
- Balcony
- Interior and exterior basement walls
- Moisture barrier under floor screed
- Under tile waterproofing
- Waterproofing of crack on roof and wall
- Can apply under water
- Water ponding test: Passed
- Indoor and outdoor connection, dome light
- 屋頂
- 洋台
- 室內室外地下室
- 地坪防濕防潮
- 地磚底防水
- 地坪, 屋頂龜裂防水修補
- 可水底施工
- 浸水試驗通過
- 燈罩, 出水口防水室內外可使用

Characteristics & Advantages / 特性

- One-component system, no mixing
- Solvent and NCO free
- 30 minutes rain resistance
- Readily applied with roller or brush
- Short drying time provides fast working
- Excellent adhesion to many substrate without primer
- No shrinkage
- 單液型, 不用攪拌
- 無溶劑不含氰胺樹脂
- 耐三十分鐘後降雨不受影響
- 滾輪毛刷施工方便
- 快乾, 工作效率高
- 黏着性佳, 可用於不同積材免底塗
- 不會收縮



Homogeneous Process



Reliable Performance



Basement to Roofs

ITEM/物品	COLOUR / 顏色	PACKING / 包裝
TMS-100	White / Grey / 白色 / 灰色	20kg Pail
	White / Grey / 白色 / 灰色	4kg Can
	White / Grey / 白色 / 灰色	1kg+75g Box
Diluent	Clear / 透明色	300g Can
	Clear / 透明色	75g Can



TESONBOND (TW-121)

2P-CEMENTITIOUS WATERPROOFING SLURRY (雙成份組合DIY彈性防水水泥)

TESONBOND is cement based waterproofing, formulates with combination of proprietary polymer and mixture of cement, sand and additive. It can brush or apply by roller directly on floor or wall of sound concrete substrate and exhibits waterproofing performance. It is water based, less odor, tile over easily and recommends minimum two coats or 1-2 kg/sq-m per coat.

Product Uses / 用途

- Bathroom, Wall and Floor
- Toilet, Kitchen
- Balcony, Terrace
- Deck, Planter Box
- 浴室，牆壁和地板
- 衛生間，廚房
- 陽台，露台
- 甲板，花盆盒

Characteristics & Advantages / 特性

- Non-toxic
- Water-based, less odor
- Consistent application
- Interior or exterior waterproofing
- 無毒.
- 水性，氣味少.
- 一致的應用.
- 室內/室外防水功能.



Colour / 顏色	Packaging / 包裝
Part A - Milky White - 乳白色	Part A - 1kg can
Part B - Grey - 灰色	Part B - 5kg pail

TESONBRUSH (TW-131)

2P-CEMENTITIOUS WATERPROOFING SLURRY (雙成份組合彈性防水水泥)

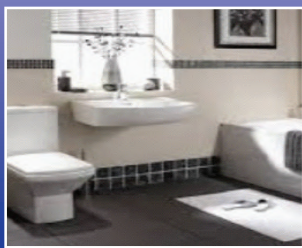
TESONBRUSH is cement based waterproofing slurry, formulates with combination of proprietary polymer and mixture of cement, sand and additive. It can brush or apply by roller directly on floor or wall of sound concrete substrate and exhibits waterproofing performance. It is water-based, less odor, tile over easily and recommends minimum two coats or 1-2 kg/sq-m per coat.

Product Uses / 用途

- Bathroom, Wall and Floor
- Toilet, Kitchen
- Balcony, Terrace
- Deck, Planter Box
- Water Tank
- Retaining Wall
- Swimming Pool
- 浴室，牆壁和地板
- 衛生間，廚房
- 陽台，露台
- 甲板，花盆盒
- 水槽
- 游泳池

Characteristics & Advantages / 特性

- Non-toxic
- Water-based, less odor
- Consistent application
- Interior or exterior waterproofing
- 無毒.
- 水性，氣味少.
- 一致的應用.
- 室內/室外防水功能.



Colour / 顏色	Packaging / 包裝
Part A - Milky White - 乳白色	22.5kg Set Part A - 5.5kg Jerry can Part B - 17kg bag
Part B - Grey - 灰色	34kg Set Part A - 9kg Jerry can Part B - 25kg bag



TESONSLURRY SF (TW-141)

2P-CEMENTITIOUS WATERPROOFING SLURRY (組合彈性防水水泥)

It is semi-flexible cement based waterproofing slurry, formulates with combination of proprietary but higher dosage of polymer and mixture of cement, sand and additive. It can brush or apply by roller directly on floor or wall of sound concrete substrate and exhibits waterproofing performance. It is water-based, less odor, tile over easily and recommends minimum two coats or 1-2 kg/sq-m per coat.

Product Uses / 用途

- Bathroom, Wall and Floor
- Toilet, Kitchen
- Balcony, Terrace
- Deck, Planter Box
- Water Tank (2-3 Layer System)
- Retaining Wall
- Swimming Pool
- 浴室，牆壁和地板
- 衛生間，廚房
- 陽台，露台
- 甲板，花盆盒
- 水箱，2-3層系統
- 水槽
- 游泳池

Characteristics & Advantages / 特性

- Positive and negative water barrier
- Resist mild chemicals found in ground water or rain
- Good adhesion to cement - based sound substrate
- Easy application
- Breathable and semi-flexible coating
- 正和負水屏障
- 抵抗地下水/雨中的化學物質
- 易於應用
- 透氣和半伸縮性塗層

Colour / 顏色	Packaging / 包裝
Part A - White - 乳白色	Part A - 10kg Jerry can
Part B - Grey - 灰色	Part B - 25kg bag

TESONSLURRY FLEX (TW-151)

2P-CEMENTITIOUS WATERPROOFING SLURRY (組合彈性防水水泥)

TESONSLURRY FLEX is highly flexible cement based waterproofing slurry, formulates with combination of proprietary, modified polymer and mixture of cement, sand and additive. It can brush or apply by roller directly on floor or wall of sound concrete substrate and exhibits waterproofing performance. It water-based, less odor, tile over easily. It exhibits good properties to most substrates and is capable of bridging hairline cracks.

Product Uses / 用途

- Bathroom, Wall and Floor
- Toilet, Kitchen
- Balcony, Terrace
- Deck, Planter Box
- Water Tank (2-3 Layer System)
- Retaining Wall
- Swimming Pool (Minimum 3 Layer System)
- 浴室，牆壁和地板
- 衛生間，廚房
- 陽台，露台
- 甲板，花盆盒
- 水槽
- (最少3層系統)
- 擋水牆
- 游泳池

Characteristics & Advantages / 特性

- Use water only for cleaning
- Resist mild chemicals found in ground water or rain
- Tile-adhesive compatible
- Good adhesion to cement - based sound substrates
- Breathable and flexible coating
- 僅使用水進行清洗。
- 抵抗地下水 / 雨中的化學物質。
- 瓷磚粘合劑兼容。
- 對水泥基材的粘合性好。
- 透氣和伸縮性塗層。

Colour / 顏色	Packaging / 包裝
Part A - White - 乳白色	Part A - 17kg Jerry can
Part B - Grey - 灰色	Part B - 25kg bag



TESONPROOF (TW-171)

1-P POLYURETHANE LIQUID MEMBRANE (單一型瀝青聚氨酯防水塗料)

TESONPROOF is one part, water-based, breathable, easy to apply polyurethane based waterproofing coating membrane. It will perform more than 700% elongation and produce seamless, elastic, crack bridging membrane after cure. It can apply to damp surface with good adhesion to concrete, asphalt and PU substrate, roller, brush, trowel or broom application is recommended.

Product Uses / 用途

- Rooftop
- Wet Area
- Planter Box
- Basement
- Swimming Pool
- Masonry Wall
- Area Need Waterproofing Prior To Tiling
- 屋頂
- 濕區
- 花盆盒
- 地下室
- 游泳池
- 磚石牆
- 平鋪磁磚前需要防水區域

Characteristics & Advantages / 特性

- High Elastic
- Fast Cure
- Excellent Adhesion
- Outstanding Crack Bridging
- Seamless, Waterproofing
- Non Re-Emulsifying
- 高彈性
- 快速凝固
- 優良的粘附力
- 優良突破橋樑
- 無縫，防水
- 無乳化

Colour / 顏色	Packaging / 包裝
Coffee Brown - 深褐色	5kg pail 20kg pail

TESON PU FOAM (TW-191)

HYDROPHOBIC WATER-REACTIVE FOAM (發泡裂縫針料)

TESON PU FOAM is PU resin with higher lipophilic propylene oxide, which reacts with water to start foaming and hydrophobic. After TW-191 is injected into walls, it reacts with water for rapid expansion to plug the crack. Using gas pressure, TW-191 is squeezed into slot to stop seepage or leakage.

Product Uses / 用途

- Plug the wall, floor, ceiling cracking
- Stop water seepage
- Stop water leakage
- Inject and foaming into substrate
- 牆面，地坪，天花板龜裂止水
- 終止流水
- 終止漏水
- 通過射入和在積材面型成發泡

Characteristics & Advantages / 特性

- Low viscosity
- Easy to apply
- Non-shrinking
- Foaming ratio 1 to 30 times
- 低粘度
- 易於使用
- 良好的工作表現
- 發泡比率1至30倍

Colour / 顏色	Packaging / 包裝
Brown - 淺褐色	18kg pail



TESON HYBRID SEALANT (TMS-600)

LOW MODULUS (低彈性膜數填縫劑)

TMS-600 is a hybrid low modulus, flexible joint sealant and adhesive that is free of isocyanates and omits low odor. It has been formulated to offer outstanding adhesion to most common building and automotive materials, such as aluminium, glass, concrete, timber, fiberglass and be used in most sealing and joint filing applications.

Product Uses / 用途

- Expansion and connection joints in the building and construction industry
- Movement joints with high rise constructions
- Sealing of joints in prefabricated building or concrete panels
- Perimeter seals around doors and windows
- Where joints have to be painted
- 伸長收縮縫使用
- 超高建物伸縮縫
- 預拌結構接縫和伸縮縫使用
- 門框窗框密封
- 可上漆

Characteristics & Advantages / 特性

- Low modulus-can withstand extreme joint movement.
- Eco-friendly, free from solvent, acid and isocyanate.
- Low odor and non-corrosive.
- Over-paintable with water based paints.
- Durable, flexible, non-sagging properties.
- 低彈性膜數.
- 無溶濟環保.
- 無酸無氰胺料.
- 無味不腐蝕.
- 可上漆 (水性漆.)
- 耐用有儀越彈性, 不垂流.

ITEM CODE	Colour / 顏色	Packaging / 包裝
TMS-600	Black 黑色	600ml sausage
MS-8000	White 白色 Grey 灰色	300ml cartridge

TESON ACRYLIC SEALANT (TE-500)

(水性可上漆填縫劑)

Teson TE-500 Acrylic Sealant (Gap Filler) specializes for sealing crack, seam, joints and any gap where a weather tight seal is needed. It can be painted with latex or oil paints. Idea for sealing wood, concrete, plasters, bricks and for interior construction on works.

Product Uses / 用途

- Sealing cracks
- Sealing seams
- Sealing joints and gaps
- 密封裂縫
- 密封接縫
- 密封接縫和縫隙

Characteristics & Advantages / 特性

- Paintable
- Water-based
- User friendly
- 可上漆
- 水性
- 使用方便

Colour / 顏色	Packaging / 包裝
Grey - 灰色 White - 白色	24pcs/ carton



TESON SILICONE (TE-600)

(硅橡膠填縫劑)

Teson Silicone is one part all purpose RTV silicone that cures in the presence of atmospheric moisture to durable flexible rubber which has excellent adhesion to most non-porous surfaces such as glass, metal, ceramic porcelain, most plastics and painted surfaces.

Product Uses / 用途

- Windows and Doors Frames
- Shopfront
- Curtain Wall
- General Sealing and Others
- 窗框門框
- 玻璃門面
- 帷幕牆
- 一般接縫

Characteristics & Advantages / 特性

- One part
- Multiple purpose
- Excellent adhesion
- 单液型
- 多功能
- 黏性優越

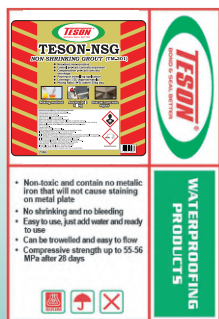


Colour / 顏色	Packaging / 包裝
Grey - 灰色 White - 白色 Black - 黑色 Clear - 透明	24pcs/ carton



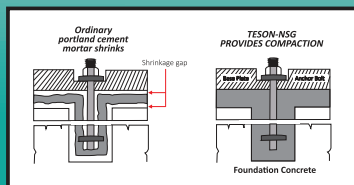
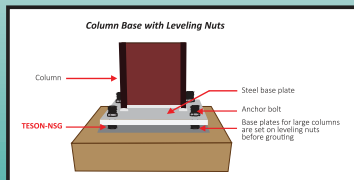
TESON-NSG (TM-301)

NON SHRINKING GROUT (通用級無收縮水泥)



- Non-toxic and contains no metallic iron that will not cause staining on metal plate
- No shrinking and no bleeding
- Easy to use, just add water and ready to use
- Can be trowelled and easy to flow
- Compressive strength up to 55-56 MPa after 28 days

WATERPROOFING PRODUCTS



TESON-NSG Non-Shrinking Grout (TM-301) is general purpose cementitious grouting for precast and prestressed panel which controlled expansion and compensate of the concrete shrinkage. Its contains portland cement, specialty aggregate and additive. TESON-NSG Non-Shrinking Grout can be used for repairing defects on concrete, grouting column base, filling coreholes and rod holes.

Product Uses / 用途

- Repairing defect of concrete
- Grouting for precast and prestressed panel
- Grouting column based
- Grouting core hole and rod hole
- Grouting crack on concrete floor
- Grouting around pipes and joints
- 修復混凝土缺陷
- 灌漿用於預製和預應力板
- 灌漿基礎柱
- 灌漿芯或棒孔
- 在混凝土地板上灌漿
- 在管道和接頭周圍灌漿

Characteristics & Advantages / 特性

- Non-toxic and not contain metallic iron that will not cause staining on metal plate.
- No shrinking and no bleeding.
- Easy to use, by add water and can ready to use.
- Can be trowel and easy to flow.
- Compressive strength up to 55-56 MPa after 28 days.
- 無毒，不含金屬鐵，不會對金屬板造成污染。
- 無萎縮，無溢出。
- 使用方便，只需加水即可使用。
- 可以抹塗，易流動。
- 28天后抗壓強度高達55-56 MPa。

Colour / 顏色

Grey - 灰色

Packaging / 包裝

25kg paper bag

TESONSTAR & TESONSTAR PREMIUM (TM-311 & TM-313)

TILE ADHESIVE & TILE ADHESIVE PREMIUM (地磚膠)

TesonStar and TesonStar Premium Tile Adhesive are general purpose cement based tile adhesive suitable for fixing most types of wall and floor ceramic tiles including monocottura, slate, quarry tiles, terracotta and natural stone. TesonStar and TesonStar Premium Tile Adhesive are suitable for "thin and thick bed application" onto rigid substrates, including concrete, cement render, brickwork and blockwork.

Product Uses / 用途

- Concrete
- Cement mortar bed
- Cement plaster or floor screed
- Brick masonry
- 混凝土
- 水泥砂漿床
- 水泥石膏/地板熨平板
- 磚砌

Characteristics & Advantages / 特性

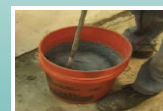
- High bond strength
- Economic tile adhesive
- Long open time
- 30 minutes C1TE Grade - TesonStar
- 30 minutes C2TE Grade - TesonStar Premium
- Long correction time
- No odor and non-toxic
- Easy to spread and non-sagging
- Easy to clean
- Thick and thin bed application
- Internal and external use
- 高粘結度。
- 經濟瓷磚膠。
- 開放時間。
- 30分钟和C1TE等级 - TesonStar。
- 30分钟和C2TE等级 - TesonStar Premium。
- 校正時間長。
- 無異味，無毒。
- 易擴散和不流掛。
- 易於清洗。
- 適用於厚和薄砂漿床。
- 適合於室內和室外使用。

Colour / 顏色

Grey - 灰色

Packaging / 包裝

25kg paper bag
20kg paper bag
5kg plastic bag



Mixing TesonStar



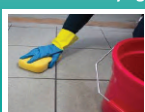
Apply TesonStar



Laying Tile-Horizontal



Laying Tile-Vertical



Grout Finishing



TESON MASTIC (TM-321)

TESON MASTIC-PROFESSIONAL READY TO USE TILE ADHESIVE 專業級地磚黏劑

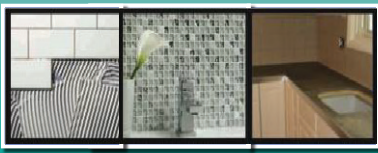
TESON MASTIC is a professional grade proprietary water-based adhesive for setting glazed, unglazed ceramic, porcelain tiles and mosaic tile on walls, floor and countertop. TESON MASTIC adhesive is used for interior application only.

Product Uses / 用途

- Walls and floors
- Porcelain mosaics
- Gypsum wallboard
- Wall, dry backsplash
- Glazed and unglazed tile
- Fully cured concrete substrate
- Kitchen and bathroom wall (Not adjoining a shower and tub)
- 牆面或地坪
- 瓷磚，鑲嵌小片磚
- 石膏板面
- 廚台面和牆鋪磚
- 釉面和非釉面磚
- 水泥地坪
- 廚房和浴室牆面

Characteristics & Advantages / 特性

- Low in odor.
- Extended open time.
- Meet D1TE standard.
- Smooth and easy to spread.
- Excellent grab up to 30 x 30 cm tile.
- Ready to use, no mixing is required.
- 無味
- 施工調整時間長
- 符合D1TE標準
- 施工容易，平滑
- 抓力優越 (30 x 30 公分磚)
- 不用加水不用攪拌立即使用



Apply Teson Mastic Mosaic Installation Counter Top Installation

Colour / 顏色	Packaging / 包裝
Light Grey - 淺灰色	1kg can 5kg pail 20kg pail

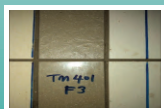
TESON READY-TO-USE TILE GROUT (TM-401)

即用型瓷磚間隙填料

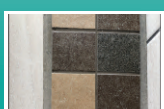
Teson Ready-To-Use Tile Grout is an advanced, ready-to-use premixed tile grout. It delivers excellent workability, no sagging, durable and abrasion resistant properties.



Apply TM-401



No Sag, No Streak



TM-401 Mock Up

Product Uses / 用途

- Ceramic Tile
- Residential & Commercial
- Floor & Wall
- Interior application
- Re-grouting application
- Join : 1.5 to 6 mm
- 瓷磚
- 住宅和商业
- 地板和牆壁
- 室内应用
- 重新間隙填料应用
- 間隙: 1.5 到 6 毫米

Characteristics & Advantages / 特性

- Easy to use and clean up per ANSI 118.3 standard
- Not mixing required. Direct apply
- Tough, durable, abrasion resistance
- No sagging per ANSI 118.3 standard
- Excellent stain resistance
- Excellent abrasion resistance per EN 12808-2 standard
- SIRIM test passed
- 按照 ANSI 118.3 标准即可使用和清理
- 无需混合，直接涂抹。优异的抗裂性
- 坚韧、耐用、耐磨。
- 按照 ANSI 118.3 标准没有下垂
- 优异的抗污性
- 符合 EN 12808-2 标准的出色耐磨性
- SIRIM 测试通过

Product code	Packing size	Packaging / 包裝	Colour / 顏色
TM-401/500G	500G	CAN	BROWN
TM-401/1.3K	1.3KG	CAN	BROWN



TESONSHIELD FB (TW-111FB)

LIQUID APPLIED MICRO – FIBER REINFORCED WATERPROOFING MEMBRANE (单成分微纤维增强防水胶)

TESONSHIELD FB is a ready-to-use, one component waterproofing membrane, formulated with micro-fiber reinforcement, designed to enhance tensile strength and provide durable protective waterproofing coating. TESONSHIELD FB is suitable for exposed application at concrete rooftop, roof tile, metal/zinc roof and vertical wall against water infiltration. Minimum two coats are required.

Product Uses / 用途

- Vertical/Horizontal
- Concrete roof deck
- Metal/Zinc roof
- Roof tile
- Masonry
- Brick wall
- 垂直水平
- 混凝土屋顶
- 金属/锌屋顶
- 瓦片屋顶
- 砌体墙
- 砖墙

Characteristics & Advantages / 特性

- More than 50 % extra tensile strength
- Elastic. Durable waterproofing membrane
- Excellent resistance to crack
- High resistance to expansion and shrinkage movement
- Good bonding to various substrate
- UV, Weather resistant
- Waterproof(waterproof ponding passed)
- Good trafficable
- Reinforcing fiber mesh not required
- SIRIM certs available
- 超过50%的额外拉伸强度
- 弹性, 耐用的防水膜
- 优异的抗裂性
- 高抗膨胀和收缩运动
- 与各种基材的良好粘合
- 防紫外线, 耐候
- 防水 (通过积水测试)
- 可通行的
- 不需要纤维网加强
- 提供SIRIM证书

Product code	Packing size	Packaging / 包装	Colour / 颜色
TW-111FB/WH/1.4K TW-111FB/GR/1.4K	1.4KG	PAIL	WHITE GREY
TW-111FB/WH/5K TW-111FB/GR/5K	5KG	PAIL	WHITE GREY
TW-111FB/WH/20K TW-111FB/GR/20K	20KG	PAIL	WHITE GREY



TESONSHIELD-HR (TW-111-HR)

1-P POLYMER MODIFIED WATERPROOFING & HEAT REFLECTIVE MEMBRANE (单成分隔热和防水胶)

TESONSHIELD HR is ready to use coating ,designed with the function to reflect heat from sunlight for vertical and horizontal application ,TESONSHIELD HR is suitable for exposed metal roof of factories , concrete rooftop and building facade

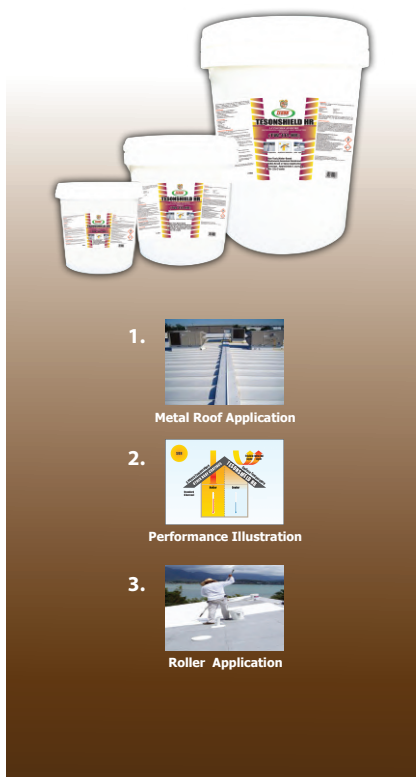
Product Uses / 用途

- Vertical & Horizontal
- Cement render
- Concrete
- Masonry wall
- Fiber cement
- Galvanized iron roof
- Steel surface (Pre-primer)
- 垂直水平
- 水泥表面
- 混凝土面
- 砌体墙
- 纤维水泥板
- 镀锌铁屋顶
- 钢表面 (打底漆)

Characteristics & Advantages / 特性

- Reflect heat from sunlight effectively
- Reduce substrate's temp by maximum 10 degree C (When expose to sunlight)
- Excellent adhesion
- UV , Weather resistance
- Waterproofing (Water ponding test passed)
- 有效地反射阳光中的热量
- 将基材的温度降低最多10摄氏 (暴露在阳光下)
- 优异的附着力
- 耐紫外线, 耐候性
- 防水 (注水试验)

Product code	Packing size	Packaging / 包装	Colour / 颜色
TW-111HR/WH/17G	17KG	PAIL	WHITE
TW-111HR/WH/4.5K	4.5KG	PAIL	WHITE
TW-111HR/WH/800G	800G	CAN	WHITE





TESONPROOFER (TW-MP113)

1-P HIGH VERSATILE LIQUID WATERPROOFING MEMBRANE (单组份高多功能液体防水膜)

TESONPROOFER is a highly versatile aqueous acrylic dispersion that is suitable for different waterproofing application. It had high adhesion and penetration on various substrates. It is water based, water dilutable with excellent workability for horizontal and vertical surface. TESONPROOFER will perform excellent water ponding performance due to its high solid content and coverage effect. TESONPROOFER can be used as primer, cement mixture, paint additive etc.

Product Uses / 用途

- RC slab, Gutter, Roofing
- Balcony
- Water tank
- Furniture
- Metal surface
- Chip board
- 钢筋混凝土平板, 天沟, 屋顶
- 阳台
- 水箱
- 家具
- 金属表面
- 芯片板

Characteristics & Advantages / 特点和优势

- Water based
- Good water resistance
- Excellent adhesion
- UV, Weather resistance
- Waterproofing (Water ponding passed)
- 水基型
- 良好的耐水性
- 优异的附着力
- 耐紫外线, 耐候性
- 防水 (通过积水测试)

Product code	Packing size	Packaging / 包裝	Colour / 顏色
TW-MP113/WH/1.4KG	1.4KG	CAN	WHITE
TW-MP113/WH/5K	5KG	PAIL	WHITE
TW-MP113/WH/20K	20KG	PAIL	WHITE



1. 
Apply Tesonproofer 2:1 with Water
2. 
Apply for Horizontal/ Vertical
3. 
Reliable Water Ponding Effect

TESON DEXCOAT 11 (TW-210)

1-P STAIN AND WATER RESISTANCE TRANSPARENT COATING (单成分的防污耐水透明涂料)

TESON DEXCOAT 11 is an inorganic-terminated binder based on proprietary technology for the impregnation of mineral substrate or as a thin layer coating for mineral substrate .It is a transparent and low viscosity coating

Product Uses / 用途




- Stain resistance impregnation
- Coating of mineral substrates (Polished or Un-polished)
- Parking garage
- Car repair shop
- Showroom
- Restaurants
- 耐污, 浸渍效果
- 矿物底材的涂层
- 停车库
- 汽车维修店
- 展示厅
- 餐厅

Characteristics & Advantages / 特性

- Excellent stain resistance
- Low viscosity , Easy handling and dosing
- Plasticizer free, Cure without tin catalyst
- Resistance to moisture
- Color enhancing
- Scratch resistance
- 优异的耐污性
- 低粘度, 易于处理和计量
- 不含增塑剂, 无锡催化剂固化
- 提高抗湿性
- 增色效果
- 耐刮擦性

Product code	Packing size	Packaging / 包裝	Colour / 顏色
TW-210/1K	1KG	CAN	CLEAR
TW-210/3.5KG	3.5KG	CAN	CLEAR
TW-210/20KG	20KG	CAN	CLEAR



1. 
By Short-Hair Roller
2. 
By Sponge
3. 
By Wiping Mop
4. 
Before Clean Up
5. 
After Clean Up



TESONLATEX (TW-161)

BONDING AGENT AND MORTAR ADDITIVE (混凝土強化添加劑)



Concrete & Plaster Repair



Vertical & Horizontal

Rendering



Small area waterproofing

TESONLATEX is modified water-based polymer emulsion, is compatible with cement and cement or sand mortar. TESONLATEX will improve adhesion, flexural, tensile strength, durability, compressive strength, workability, abrasion resistance, reduce cracking and water resistance properties after mix with cement or cement or sand mortar.

Product Uses / 用途

- Repair Mortar
- Bonding Slurry
- Grout Additive
- Ceramic Tile Adhesive
- Prime Coating
- Fairing Coat
- Thick Bed Mortar
- Floor Screed
- 修補砂漿
- 粘結漿料
- 瓷磚，勾縫添加劑
- 瓷磚粘劑添加劑
- 主塗層
- 整流罩
- 厚床砂漿
- 地坪

Characteristics & Advantages / 特性

- Improve bonding strength of fresh mortar to old concrete.
- Increase adhesion of vertical marbles tiles
- Improve water-resistant when added to tile grout.
- Improve workability and abrasion resistance of screed.
- Improve adhesion and water resistance for tile adhesive or tile grout.
- As primer coat via brush or roller on substrate before applying waterproofing coating.
- As fairing coat with cement mortar for improved adhesion and water resistance.
- Improve ready mixed mortar and mortar screed property as thick bed mortar.
- 提高新砂漿與舊混凝土的粘結強度
- 增加垂直大理石瓷磚的附著力
- 添加到瓷磚灌漿時，提高耐水性
- 減少收縮和裂紋
- 提高地坪的可加工性和耐磨性。
- 提高瓷磚膠粘劑或瓷磚水泥漿的附著力和耐水性
- 塗上防水塗料之前，用刷子或輥子塗作為基底上的的底漆
- 改善附著力和耐磨性
- 提供現成的混合砂漿和地坪作為厚床砂漿

Colour / 顏色	Packaging / 包裝
Milky White - 乳白色	4L square bottle 18L Jerry can

TESONMAGIC (TW-200)

LOW-VOC, NANO-ENHANCED WATER REPELLENT (低聚體納米強化抗水劑)



Direct Apply



Concrete Block



Beading Effect



DOP
Depth of Penetration

TW-200 is an emulsion with nano-enhanced design to protect surfaces against moisture. This waterproofing system respects the environment since it is entirely formulated in water base. It is free from any organic solvent and it does not contain ecotoxic surfactant. After it had dried on the surface, TESONMAGIC repels water and allow walls to breathe. Experience acquired shows that nano-water repellents are a good answer to humidity problems in construction materials, particularly when for esthetical reason natural aspect of the material should be preserved. TESONMAGIC has been awarded a test certificate by CSTC-Center scientifique et technique de la Construction-Belgium.

Product Uses / 用途

- Concrete,
- Pre-cast Concrete
- Brick, Masonry
- Stone, Sandy Rock
- Tile Joint
- Mortar
- 混凝土，預製混凝土
- 磚，磚石
- 石，沙質岩
- 瓷磚接縫
- 砂漿

Characteristics & Advantages / 特性

- High water penetration resistance by capillarity action.
- Outstanding hydrophobia and beading effect.
- Versatility allowing its use on many porous mineral material.
- Very good vapour permeability, breathable with very low surface tension.
- Very slight change in the material's natural color and aspect.
- Improve pollution resistance and easy for cleaning.
- UV and chemical resistance, reduce efflorescence.
- Penetrate 2 - 5mm of porous - waterproofing.
- 毛細管作用，對水的耐滲透性高
- 突出的疏水和珠光效果
- 多功能性，可用於許多多孔礦物材料
- 透氣性好，表面張力非常低
- 材料的自然顏色只有輕微的變化
- 提高耐污染性，易於清潔
- 抗紫外線和耐化學腐蝕，減少風化
- 穿透 2-5 毫米多孔基材達到長期防水功能

Colour / 顏色	Packaging / 包裝
Milky White - 乳白色	1kg bottle 5kg pail 20kg pail



TESON AQUASTICK (TAS2)

(速乾水底漆)

A two part epoxy compound specialty to repair damp, wet and underwater application. It repairs, rebuilds and bonds to many substances such as fiberglass, metal, wood, concrete, PVC, ceramic and other materials. Aquastick has a work life of 5-7 minutes. After 30 minutes, it will harden and bonds well. It can be drilled, tapped, machined and sanded when fully cured.

Product Uses / 用途

- Fiberglass
- Metal
- Wood
- Concrete
- PVC
- Ceramic
- Others
- 玻璃纖維
- 金屬
- 木料
- 混凝土
- PVC
- 陶瓷
- 其他

Characteristics & Advantages / 特性

- Under water application
- Multiple purpose
- Excellent adhesion
- Versatile finishing
- 可水底施工.
- 多功能.
- 優越黏着性.
- 后处理容易.

Colour / 顏色	Packaging / 包裝
White 白色	1oz - 12pcs / carton



Under water application

HARDEX INJECTION ANCHOR (PURE EPOXY RESIN) (H-E280)

環氧射出形錨固膠

HARDEX H-E280 INJECTION ANCHOR is a two part high performance anchoring adhesive and epoxy resin based with a solvent-free properties. This resin can be applied in one single action that produce strong chemical resistant fixing as well as cost effective benefit.

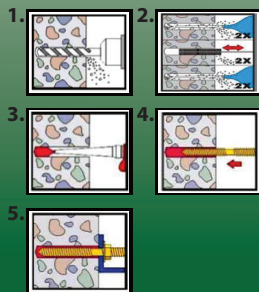
Product Uses / 用途

- Solid rock
- Hard natural and reconstituted stone
- Wood
- Concrete
- Steel
- 岩石
- 天然和人工石塊
- 木材
- 混凝土
- 鋼鐵

Characteristics & Advantages / 特性

- High load capacity
- Non-cracked concrete
- Styrene-free
- High stability
- Can use on damp area
- Non-sag, even overhead
- No transportation restriction
- Low odor
- Non-contraction after harden
- 高承載能力.
- 不造成龜裂.
- 無苯乙烯.
- 高穩定性.
- 潮濕面可施工.
- 不垂流, 包括水平面上空面施工.
- 運輸便利.
- 低氣味.
- 硬化后無收縮.

Colour / 顏色	Packaging / 包裝
Part A : White - A 組 :	Cartridge 280ml
Part B : Black - 黑色 B 組 :	





HARDEX PU FOAM (HPU-30)

聚胺發泡膠

HarDEX PU foam is a one component, ready to use multi-purpose polyurethane foam. It is fitted with a plastic adapter head for use with a foam application gun or a plastic applicator. The foam will expand and cure by moisture in the air. It is used in a wide range of building applications. It has excellent filling and sealing capabilities with great mounting capacity, high thermal and acoustical insulation.

Product Uses / 用途

- Sealing
- Thermal Insulation
- Acoustical Insulation
- Paintable
- 填縫
- 隔熱
- 隔音
- 可上漆

Characteristics & Advantages / 特性

- One Component
- Non-shrink
- Non-sagging
- Ozone friendly propellant (CFC Free)
- Adhesion to a wide variety of surface
- 單液型.
- 不收縮.
- 不垂流.
- 環保型.
- 适用于不同材質面.



Colour / 顏色	Packaging / 包裝
Part : White - 白色 部分:	Aerosol 750ml

SEALANT GUN (P-H-S GUN 13.5") TESON PE BACKER ROD (TS-202)



1. Sealant Gun (P-H-S Gun 13.5")

This durable aluminium alloy sausage gun is designed to fit hybrid sealant, gap filler, sealant and adhesive in sausage packing, distributing the material evenly with a smooth trigger action. It is lightweight, features a durable aluminium alloy body and includes two replacement nozzles.

具有耐用特性的铝合金腊肠包装的打胶枪，适合TMS-600施工使用。此打胶枪轻便，出料平均，平顺，耐用并随枪附送出料枪头。

2. Teson PE Backer Rod - Closed Cell PEF Rod (TS-202)

Teson Backer Rod is a closed cell, low density polyethylene foam, suitable for Teson Hybrid Sealant (TMS-600). Designed for use as a backing material in construction joints before the application of sealants. For expansion joints between bricks, masonry, precast panels, peripheral joints around aluminium and timber windows, and expansion joints between bricks and masonry.

Teson PE Backer Rod是密封式细胞，低密度PE发泡材料，设计专门使用于建筑接缝配合TMS600 施工要求，使用于伸缩缝，砖墙，预制混凝土面板，窗框周围添缝，或是其他建筑材料伸缩缝施工的需要。

3. Recommended Uses

Suitable for (TMS-600) for expansion joints between bricks, masonry, precast panels peripheral joints around aluminium and timber windows, and expansion joints between bricks and masonry.

可适合TMS 600 在不同材料面伸縮縫和窗框填縫施工使用。

4. Packing Detail

* P-H-S GUN 13.5" - 6pcs/carton

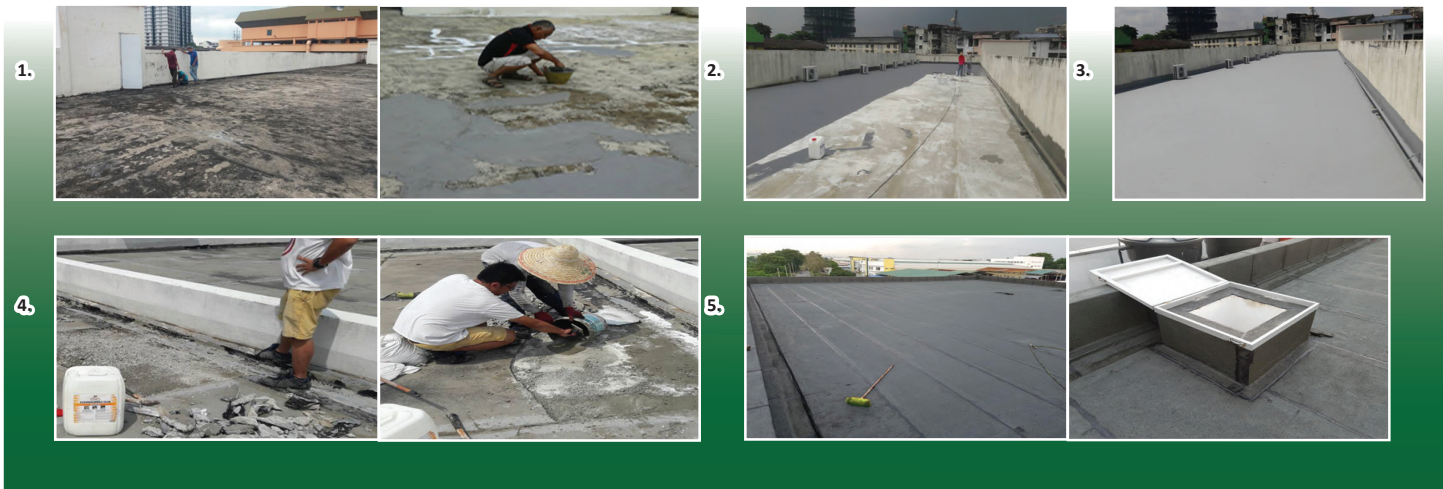
* Teson PE Backer Rod-Per requirement.



PROJECT PHOTO

(PROJECT REFERENCE)

工地實績照片參考



1. Surface preparation by TesonSlurry FLEX TW-151.
屋頂地坪面通过 TesonSlurry Flex TW-151 修補处理.
2. Apply TesonShield TW-111.
屋頂地坪防水施工示意图.
3. Complete Rooftop by TesonShield TW-111.
完成屋頂地坪防水施工.

4. Surface preparation by TesonLatex TW-161.
TesonLatex TW-161 屋頂地坪修補处理.
5. Roof top waterproofing by TesonGuard TW-101.
屋頂地坪使用 TesonGuard TW-101 完成防水施工.

PROJECT PHOTO

(PROJECT REFERENCE)

工地實績照片參考



1. Surface preparation by TesonSlurry FLEX TW-151.
使用 TesonSlurry Flex TW-151 在地坪表面处理.
2. Waterproofing by Teson PU Hybrid TW-181.
使用 Teson 聚胺脂防水材料 TW-181 施工.
3. RC Rooftop complete, waterproofing application with Teson PU Hybrid TW-181.
RC 屋頂表面使用 Teson 聚胺脂防水材料 TW-181 完成防水施工.

4. Surface preparation with Teson PU Hybrid TW-181 & Fiber Mesh.
地坪面準備使用 Teson PU Hybrid TW-181 聚胺脂防水材料和玻纖網.
5. Waterproofing application complete with Teson PU Hybrid TW-181.
使用 Teson TW-181 聚胺脂防水材料來完成防水施工.



PROJECT PHOTO

**TW-111 TESONSHIELD
(PROJECT REFERENCE)**
工地实績照片参考



1. Apply first coat of Teson Shield
涂上第一层 Teson Shield

2. Apply Fibre Mesh after 1st coat of Teson Shield
在第一层 Teson Shield 涂上纤维网

5. No More Leaking
不再泄漏

3. Complete 2nd coat of Teson Shield
完成第二层 Teson Shield

4. Apply TMS-600 Hybrid Sealant at Expansion Joint
在伸缩缝处涂打 TMS-600 混合密封剂

PROJECT PHOTO

**TW-181, TMS-600, TMS-100 & TW-141
(PROJECT REFERENCE)**
工地实績照片参考



1. Substrate cracking line inspection
基材龟裂线处检查

2. Repair by Teson Slurry SF
使用 Teson Slurry SF (TW-141) 修補

5. TMS-100 Alpha Hybrid Balcony Waterproofing
TMS-100 Teson Alpha Hybrid 陽台防水施工

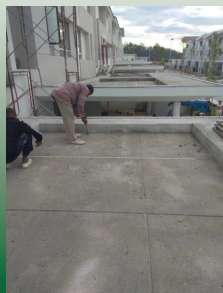
3. Expansion joint repair by TMS-600 Hybrid Sealant
TMS-600 混合密封胶进行伸缩缝修复

4. Two coats Teson PU Hybrid with Teson CSM Fiber Mesh
涂两层 Teson PU Hybrid (TW-181) 结合 Teson CSM 波纤网



PROJECT PHOTO

(TMS 600 PROJECT REFERENCE)
施工示意图



Apply TMS 600 at Grooveline of Concrete Rooftop
TMS-600 屋顶水泥面伸缩缝施工

PROJECT PHOTO

(TW-181 PU HYBRID PROJECT REFERENCE)
屋顶水泥面防水全系列产品施工示意图



Teson Slurry Flex TW-151
Crack Line Repair



Teson Non Shrinking Grout
for Angle Fillet Treatment



TW-181 PU Hybrid
Waterproofing - 1st



TW-181 PU Hybrid
Waterproofing-2nd Coat

TesonSlurry Flex TW-151
裂縫修補

Teson Non Shrink Grout
夾角處理

Teson-181 PU Hybrid
第一层涂布施工

Teson-181 PU Hybrid
第二层涂布施工

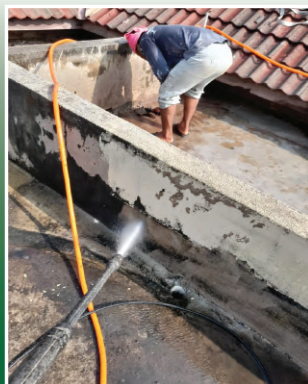


PROJECT PHOTO

(TW-113 PROJECT REFERENCE)

工地實績照片參考

1.



1.Substrate preparation and prime with Teson proofer (TW-113)

使用 Teson proofer (TW-113) 准备地平材和打底

PROJECT PHOTO

(TW-111 PROJECT REFERENCE)

工地實績照片參考

2.



2.Apply two coats of Teson Shield (TW-111) with Fiber mesh

涂上两层 Teson Shield (TW-111),介于TW-111 之间应用纤维网



PROJECT PHOTO

(PROJECT REFERENCE)

工地實績照片參考

1.



1. SITE INSPECTION

实地检查

PROJECT PHOTO

(PROJECT REFERENCE)

工地實績照片參考

2



2.SITE PREPARATION

场地准备



PROJECT PHOTO

(TW-MP-113 PROJECT REFERENCE)

工地實績照片參考

3.



3. SUBSTRATE PREPARATION AND APPLY TW-MP113 TESON PROOFER AS PRIMER

基材准备和应用 TW-MP113 TESONPROOFER 作为底漆

PROJECT PHOTO

(TESON FIBER MESH PROJECT REFERENCE)

应用 TESON FIBER MESH 作为加固目 工地實績照片參考

4.



4. APPLY TESON FIBER MESH AS REINFORCEMENT

应用 TESON FIBER MESH 作为强化目的



PROJECT PHOTO

(TW-111 PROJECT REFERENCE)

工地實績照片參考

5.



**5. APPLY FIBER MESH BETWEEN TWO COATS OF TESON SHIELD (TW-111) ,
WALL UPTURN TREATMENT BETWEEN 25 TO 50 MM HEIGHT.**

在涂上两层 **TESON SHIELD (TW-111)** 之间 应用纤维网，
上翻处理墙壁高度 **25 至 50 MM** 之间。

PROJECT PHOTO

(TW-111 PROJECT REFERENCE)

工地實績照片參考

6.



6. COMPLETION OF ROOF TOP WATERPROOFING REPAIR WORK

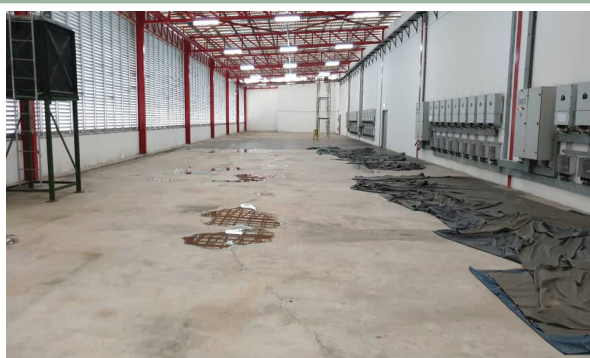
完成屋顶水维修工程



PROJECT PHOTO

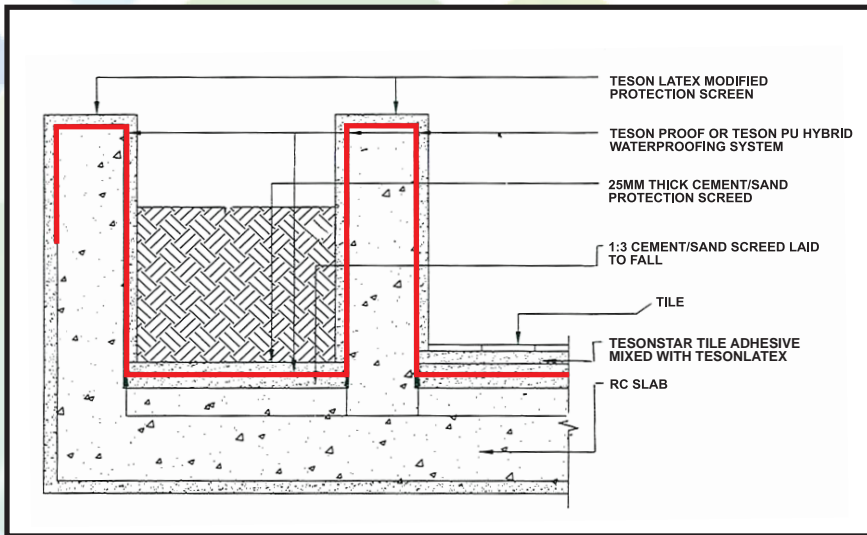
(TW-181, TMS-600 & CSM FIBER)

施工示意图



Apply to TS SOLARTECH SDN. BHD. SCIENCE PARK, BUKIT MINYAK, PENANG
PRODUCT : TW-181, TMS-600 & CSM FIBER
TW-181, TMS-600 & CSM FIBER 屋顶水泥面伸缩缝施工

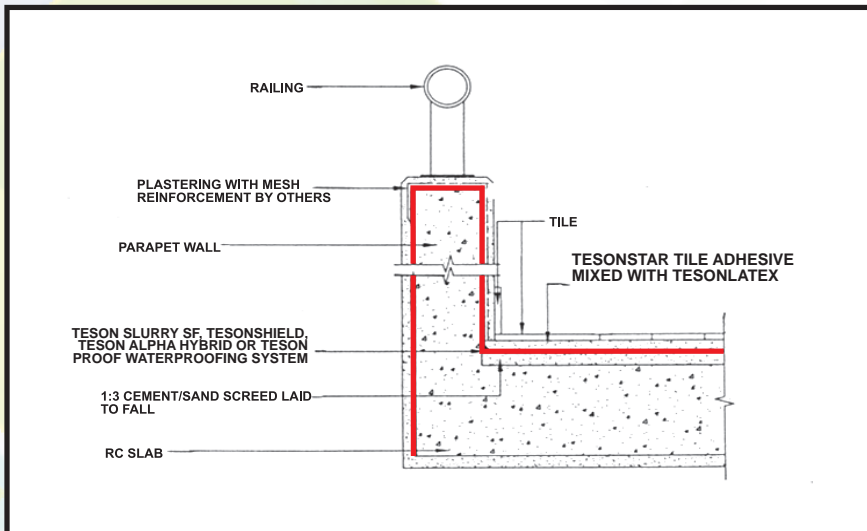
WATERPROOFING DETAIL TO PLANTER BOX



TESON PU HYBRID (TW-181)

- * ONE COMPONENT, ELASTOMERIC LIQUID APPLY
- * SUITABLE FOR RC ROOF, BALCONY, TERRACE
- * MINIMUM TWO COATS, TESON CSM FIBER REQUIRED FOR RE-ROOFING WATERPROOFING
- * COVERAGE: APPROXIMATE 15SQ-M / 20KG
- * ELONGATION: 150~200%
- * TENSILE STRENGTH: $\pm 1.5\text{ N} / \text{SQ-MM}$

WATERPROOFING DETAIL TO BALCONY / TERRACE



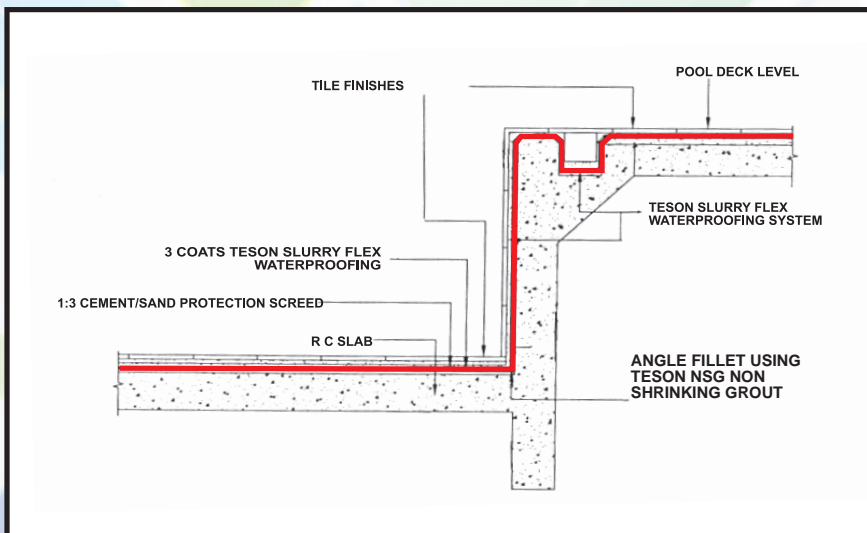
TESON SLURRY SF (TW-141)

- * NON-TOXIC, EASY APPLY, SEMI-FLEXIBLE
- * MIXING RATIO: 10KG LIQUID WITH 25KG POWER
- * MINIMUM TWO COATS
- * COVERAGE: 1KG / SQ-M
- * TENSILE STRENGTH: $>1\text{ N} / \text{SQ-MM}$
- * ELONGATION: 25%

TESON ALPHA HYBRID (TMS-100)

- * SOLVENT FREE
- * HIGH SOLID CONTENT ($>90\%$)
- * LOW VOC, NO SHRINKAGE
- * CAN APPLY UNDER DAMP SURFACE
- * 30 MINUTES RAIN RESISTANCE
- * COVERAGE : 1 SQ-M / 1KG, 1MM THICKNESS

WATERPROOFING DETAIL AT SWIMMING POOL



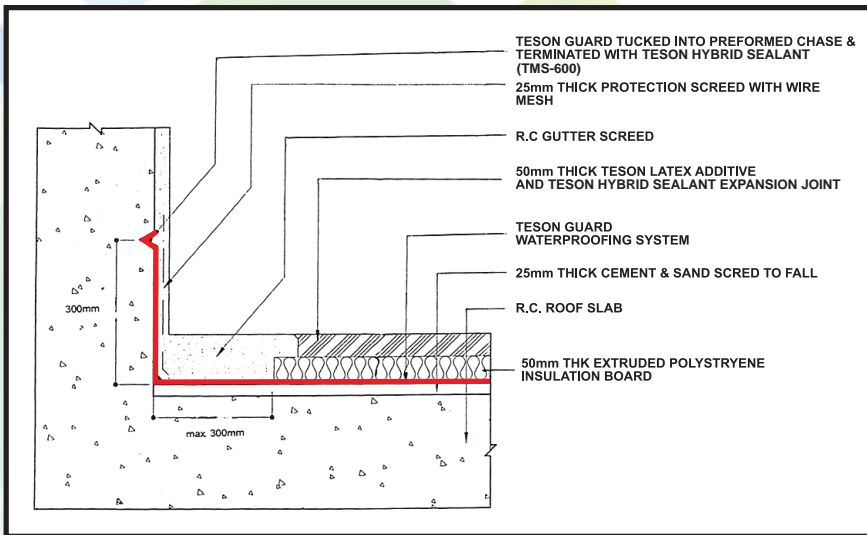
TESON SLURRY FLEX (TW-151)

- * NON-TOXIC, EASY APPLY, FLEXIBLE SYSTEM
- * MIXING RATIO: 17KG LIQUID WITH 25KG POWER
- * MINIMUM THREE COATS
- * COVERAGE: 1KG / SQ-M / COAT
- * ELONGATION: 150% (MEET HDB SPEC)
- * TENSILE STRENGTH: $>1\text{ N} / \text{SQ-MM}$

LIMITED WARRANTY:

Sellers and manufacturers only obligation shall be replacement of such quantity of product proved to be defective. All advice given here with is to the best of knowledge, true and accurate. All recommendations or suggestions are made without guarantee. Since the conditions of use are beyond our control, the seller or manufacturer shall not be liable for any injuries, loss or damage, direct or consequential arising from the use of or the failure of the product. Before using, user shall determine the suitability of the product for his intended use and user assumes all risk and liability.

WATERPROOFING DETAIL TO ROOF DECK PARAPET WALL



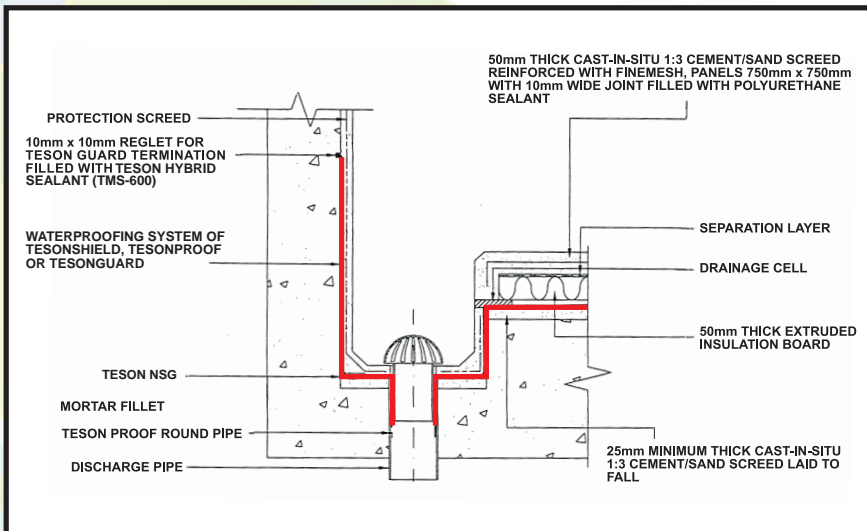
TESON GUARD (TW-101)

- * READY TO APPLY 1X10M REINFORCED BITUMEN SHEET
- * SANDED TYPE FOR CONCEALED SITE, MINERAL
- * TYPE FOR EXPOSED SITE CONDITION
- * EXCELLENT UV, DIMENSIONAL STABILITY & MECHANICAL PROPERTIES
- * SUITABLE FOR ROOF TOP, BASEMENT, BALCONY
- * COVERAGE : 10-SQ-M / ROLL

TESON HYBRID SEALANT (TMS-600)

- * LOW MODULUS - CAN WITHSTANDS EXTREME JOINT MOVEMENT.
- * ECO - FRIENDLY, FREE FROM SOLVENT, ACID AND ISOCYANATE.
- * LOW ODOUR AND NON-CORROSIVE.
- * PAINTABLE WITH WATER-BASED PAINTS.
- * DURABLE, FLEXIBLE AND NON-SAGGING PROPERTIES.

WATERPROOFING DETAIL TO ROOF GUTTER



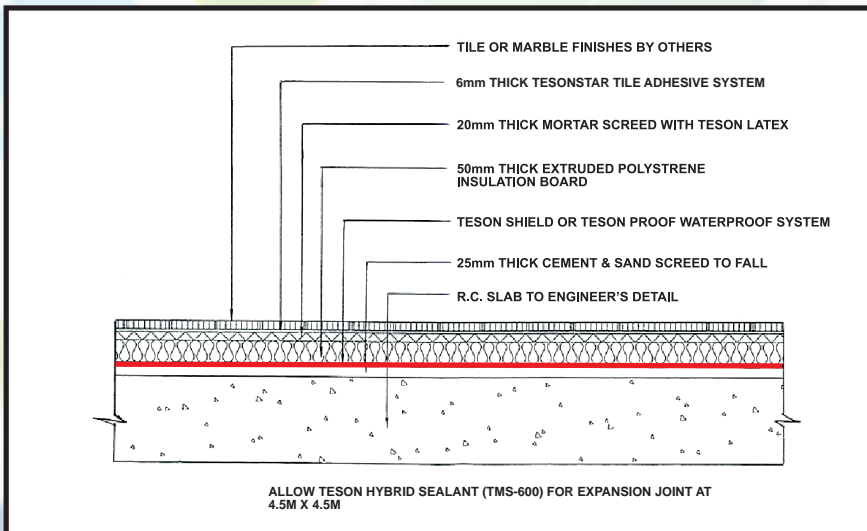
TESON PROOF (TW-171)

- * ONE COMPONENT, BITUMEN MODIFIED POLYURETHANE BASE WATERPROOFING
- * SUITABLE FOR CONCRETE, ASPHALT, PU SUBSTRATE AND DAMP SURFACE
- * MINIMUM TWO COATS (1~1.5MM) WITH REINFORCEMENT
- * COVERAGE: 13-15 SQ-M / 20KG (1MM THICKNESS)
- * ELONGATION: $\pm 700\%$
- * TENSILE STRENGTH: 15KGF / SQ-CM

TESON-NSG NON SHRINKING GROUT (TM-301)

- * NON-TOXIC AND NOT CONTAIN METALLIC IRON, STAINING FREE
- * NO SHRINKING AND NO BLEEDING.
- * EASY TO USE, BY ADD WATER AND CAN READY TO USE.
- * CAN BE TROWELLED AND EASY TO FLOW.

WATERPROOFING DETAIL TO PRIVATE ROOF TERRACE



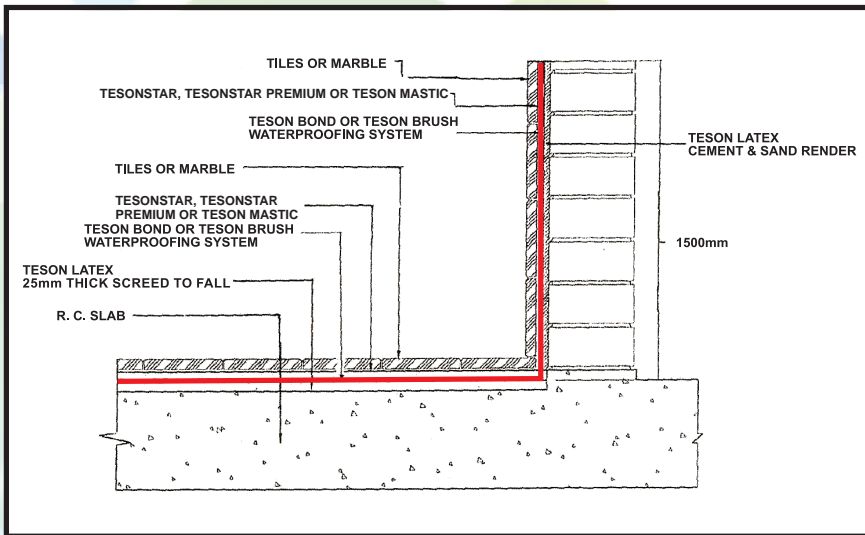
TESON SHIELD (TW-111)

- * ONE COMPONENT, ELASTOMERIC LIQUID APPLY
- * SUITABLE FOR RC ROOF, BALCONY, TERRACE
- * MINIMUM TWO COATS, Teson CSM FIBER LAYER MAY REQUIRED.
- * COVERAGE: APPROXIMATE 5SQ-M / 20KG
- * ELONGATION: 150~200%
- * TENSILE STRENGTH: $\pm 1.5 \text{ N / MM}^2$

LIMITED WARRANTY:

Sellers and manufacturers only obligation shall be replacement of such quantity of product proved to be defective. All advice given here with is to the best of knowledge, true and accurate. All recommendations or suggestions are made without guarantee. Since the conditions of use are beyond our control, the seller or manufacturer shall not be liable for any injuries, loss or damage, direct or consequential arising from the use of or the failure of the product. Before using, user shall determine the suitability of the product for his intended use and user assumes all risk and liability.

WATERPROOFING DETAIL TO SHOWER AREA



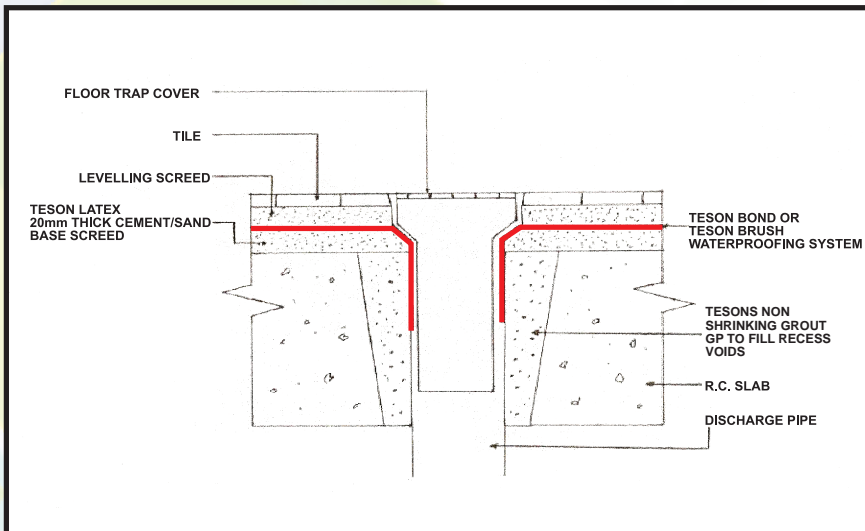
TESON BOND (TW-121)

- * NON-TOXIC, EASY APPLY, WATER-BASED
- * MIXING RATIO: 1 KG LIQUID WITH 5 KGS POWDER
- * MINIMUM TWO COATS
- * COVERAGE: APPROXIMATE 2.5-3.5 KG/SQ-M FOR 2 COATS
- * TENSILE STRENGTH: > 1 N / SQ-MM
- * ELONGATION : 5-10%

TESON MASTIC

- * NO MIXING REQUIRED
- * READY TO USE TILE ADHESIVE
- * MEET D1TE STANDARD
- * SUITABLE FOR TILE, PORCELAIN TILE, MOSAICS
- * COVERAGE: APPROXIMATE 1KG / SQ-M

DISCHARGE PIPE DETAIL AT WET AREA



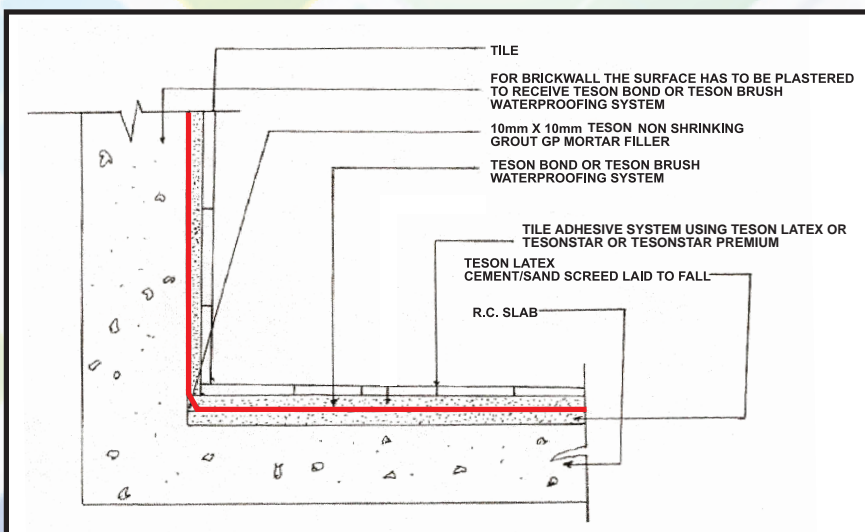
TESON BRUSH (TW-131)

- * NON-TOXIC, EASY APPLY, ECONOMIC
- * MIXING RATIO: 5.5 KG LIQUID WITH 17 KGS POWDER
- * MINIMUM TWO COATS
- * COVERAGE: APPROXIMATE 2.5 -3.5 KG / SQ-M FOR 2 COATS
- * TENSILE STRENGTH > 1 N / SQ-MM
- * ELONGATION : 10%

TESON LATEX (TW-161)

- * IMPROVE MORTAR BONDING STRENGTH
- * IMPROVE WATER RESISTANT, WORKABILITY
- * SUITABLE FOR MORTAR, SCREED, PRIMING, TILE BEDDING

WATERPROOFING DETAIL AT WET AREA



TESON LATEX (TW-161)

- * IMPROVE ADHESION, FLEXURAL, TENSILE STRENGTHS
- * IMPROVE WATER RESISTANCE, REDUCE SHRINKAGE, CRACKING
- * SUITABLE FOR MORTAR, RENDERING, SCREED APPLICATION
- * COVERAGE: APPROXIMATE 1-3 L / SQ-M , 10MM THICKNESS

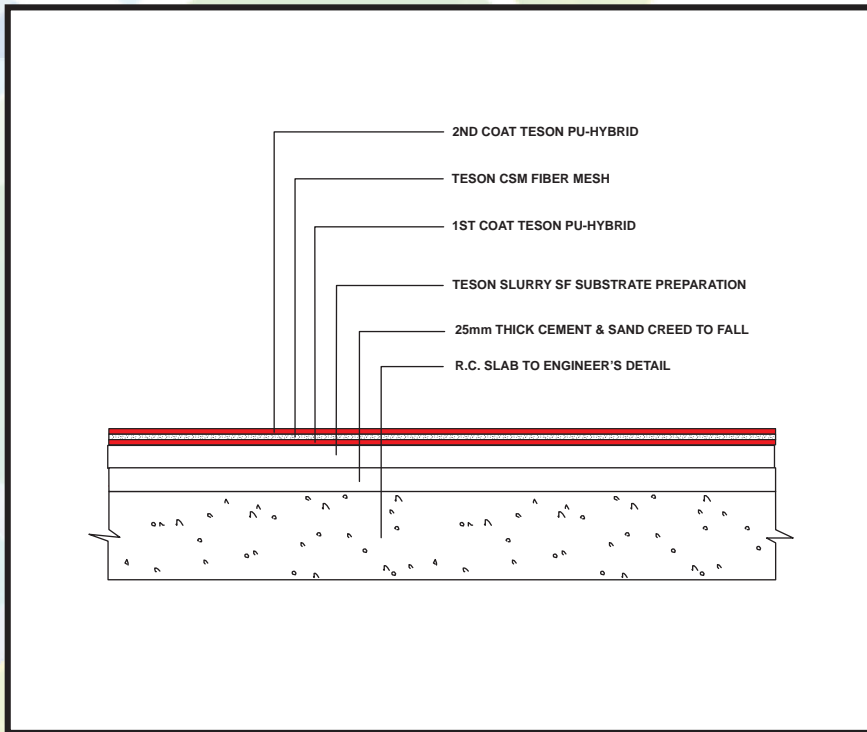
TESONSTAR (TM-311) OR TESONSTAR PREMIUM (TM-313)

- * C1TE & C2TE GRADE
- * THICK & THIN BED APPLICATION
- * INTERIOR & EXTERNAL USE

LIMITED WARRANTY:

Sellers and manufacturers only obligation shall be replacement of such quantity of product proved to be defective. All advice given here with is to the best of knowledge, true and accurate. All recommendations or suggestions are made without guarantee. Since the conditions of use are beyond our control, the seller or manufacturer shall not be liable for any injuries, loss or damage, direct or consequential arising from the use of or the failure of the product. Before using, user shall determine the suitability of the product for his intended use and user assumes all risk and liability.

TESON ROOF DECK WATERPROOFING SYSTEM



TESON PU HYBRID (TW-181)

- * ONE COMPONENT, ELASTOMERIC LIQUID APPLY
- * SUITABLE FOR RC ROOF, BALCONY, TERRACE
- * MINIMUM TWO COATS, TESON CSM FIBER REQUIRED FOR RE-ROOFING WATERPROOFING
- * COVERAGE: APPROXIMATE 15SQ-M / 20KG
- * ELONGATION: 150~200%
- * TENSILE STRENGTH: $\pm 1.5 \text{ N} / \text{SQ-MM}$

TESON SLURRY SF (TW-141)

- * NON-TOXIC, EASY APPLY, SEMI-FLEXIBLE
- * MIXING RATIO: 10KG LIQUID WITH 25KG POWER
- * MINIMUM TWO COATS
- * COVERAGE: 1KG / SQ-M
- * TENSILE STRENGTH: $>1 \text{ N} / \text{SQ-MM}$
- * ELONGATION: 25%

LIMITED WARRANTY:

Sellers and manufacturers only obligation shall be replacement of such quantity of product proved to be defective. All advice given here with is to the best of knowledge, true and accurate. All recommendations or suggestions are made without guarantee. Since the conditions of use are beyond our control, the seller or manufacturer shall not be liable for any injuries, loss or damage, direct or consequential arising from the use of or the failure of the product. Before using, user shall determine the suitability of the product for his intended use and user assumes all risk and liability.







NOTE



EXCEL INGENIOUS SDN. BHD. (1045163-X)

No 2, Jalan IM 3/6 Kawasan Perindustrian IM 3, 25200 Kuantan, Pahang Darul Makmur, Malaysia.

Tel: +609-572 1063 Fax: +609-572 1066

Email: info@teson.co